

Mounting Instruction 74

Installation of the maxiFeeder MF-4

Products:

DS-85 / FPi 5600 / FD 6404 / C850

DS-85i / FPi 5700 / FD 6406 / C850i

DS-90i / FPi 6600-2 / FD 6606 / C900i

DS-95i / FPi 6700 / FD 6608 / C950i



10/2018
Version F

Table of Contents

| | | |
|----------|-------------------------------------|----------|
| 1 | General | 1 |
| | General..... | 1 |
| 2 | Contents | 3 |
| | Delivered parts..... | 3 |
| 3 | Installation procedure | 5 |
| | General note..... | 5 |
| | Preparation..... | 5 |
| | Mounting instruction..... | 6 |
| | Add a license..... | 11 |

1 General

General

Distributors network

This mounting instruction describes the mechanical as well as the electrical installation and the license activation of the maxiFeeder MF-4 on the systems as mentioned in the table below.

| Neopost | Francotyp Postalia | Formax | Frama |
|---------|-----------------------|---------|-------|
| DS-85 | FPi 5600 | FD 6404 | C850 |
| DS-85i | FPi 5700 | FD 6406 | C850i |
| DS-90i | FPi 6600-2 | FD 6606 | C900i |
| DS-95i | FPi 6700 | FD 6608 | C950i |



Depending on the distributors network different names for the Document Systems exist. Throughout the document only the Neopost names will be used.

Factory fitted or field upgrade

The maxiFeeder MF-4 can be ordered factory fitted where the socket is pre-fitted and license is activated in the corresponding document system.

The maxiFeeder MF-4 can also be ordered field fitted in order to upgrade an existing document system.

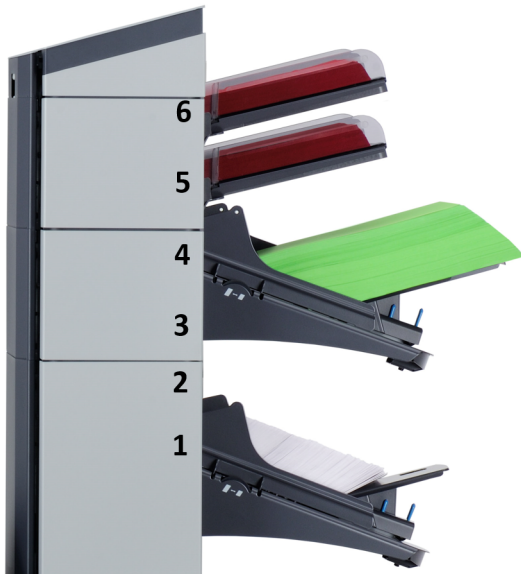
License key

A maxiFeeder MF-4 has to be ordered with a license key (separately) to activate the document system either for short documents (up to 156 mm) or for documents with a max. height of 356 mm. All hardware items needed for installation will be delivered together with the maxiFeeder.

Position of the maxiFeeder

The maxiFeeder can be mounted at feeder position 1 (lower feeder). A second maxiFeeder can be fitted and positioned at feeder position 4. In case two maxiFeeders are used:

- only one license is required (156 mm or 356 mm);
- four feeder positions are occupied (position 2 & 3 are not used).



Available part numbers

The table below shows an overview of the available part numbers of the maxiFeeder kits and licenses for all systems.

| Part number | Description | Remarks |
|-------------|--|-------------------------|
| A0073048 | maxiFeeder Hardware Tower FV Field Fit | |
| A0073049 | maxiFeeder Hardware FPi Tower FV Field Fit | Francotyp Postalia only |
| | | |
| A0072850 | maxiFeeder license key max. 156 mm documents | |
| A0072851 | maxiFeeder license key max. 356 mm documents | |



If for some reason the Field fitted license key has not been delivered with the maxiFeeder it can also be found at <http://ra.neopost.com/input/keys.php>.



This document should be used in combination with the service documentation of the FV-2B/FV-2C, especially the parts lists.

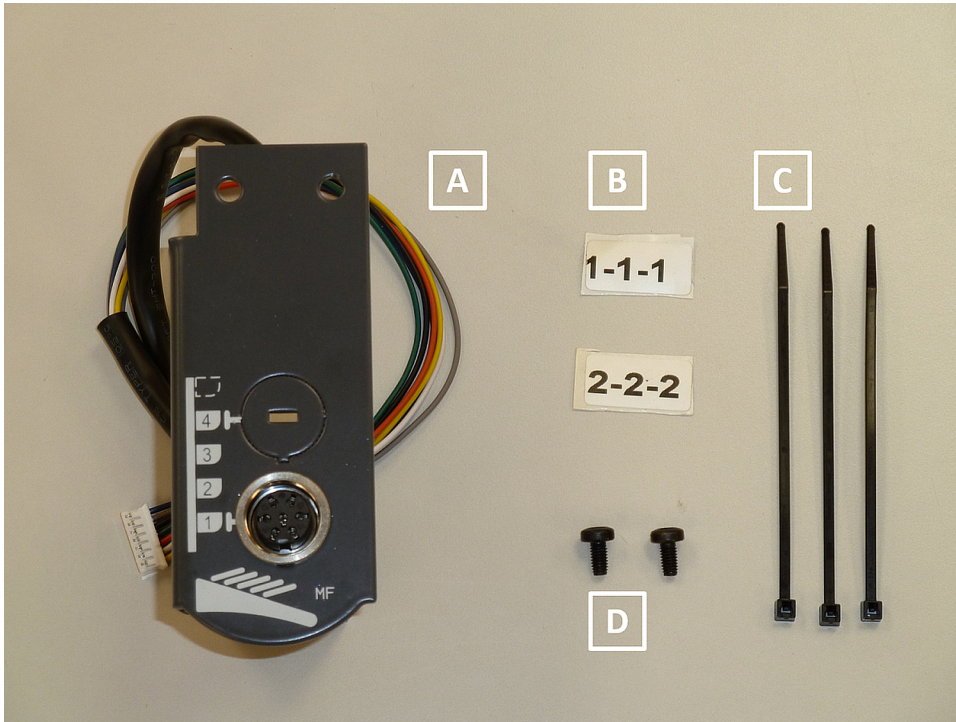
2 Contents

Delivered parts

The maxiFeeder kit Field Fitted consists of the following parts:

| Item | Description | Part number | Qty | Remarks |
|------------------------------------|--|-------------|-----|-----------------------------------|
| 1 | MaxiFeeder | - | 1 | No specific part number available |
| 2 | Document support plate | - | 1 | No specific part number available |
| 3 | Mounting Instruction 74 | 2894185A | 1 | This document |
| 4 | Plastic bag with connector bracket, fixing parts and stickers indicating MF for position 1 or 2. | A0011584 | 1 | |
| Contents of the plastic bag | | | | |
| | A. Connector bracket with wiring | 2964439G | 1 | No specific part number available |
| | B. Stickers 1 - 2 | - | 2 | |
| | C. Cable tie | 2040755L | 3 | |
| | D. Torx M4x8 DIN7500 black | 2825892M | 2 | |





Optional parts

The following parts are optional for a maxiFeeder but are not as standard delivered:

| Part number | Description | Remarks |
|-------------|------------------|-----------------------------|
| 2836432R | Guide spring kit | For better guidance of BREs |
| 2964032H | A4 paper guide | |
| 2964035L | 11" paper guide | |

3 Installation procedure

General note



Graphics used in this chapter may be slightly different however the procedure will be similar unless it is described otherwise.

Preparation

In case of mounting two maxiFeeders:

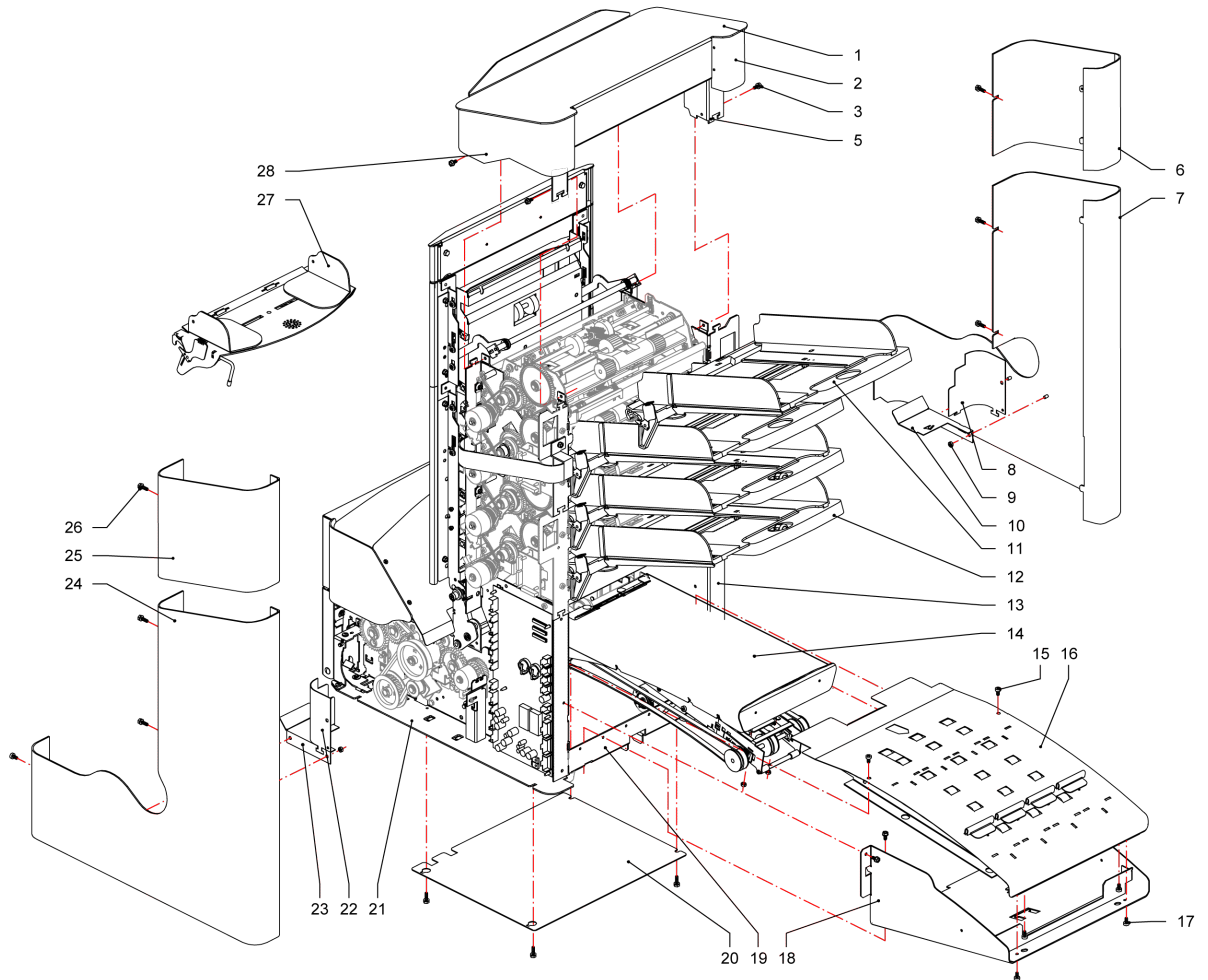
1. Remove from the second delivered kit the connector and wiring from the connector bracket. After that, this connector bracket is not needed anymore.
2. Remove from the first delivered connector bracket the plate as indicated in the figure.



3. Mount the connector and wiring at this position.
 4. Place the stickers at the wiring to mark the position:
 - the upper connector is for the second maxiFeeder
 - the lower connector is for the first maxiFeeder.
-

Mounting instruction

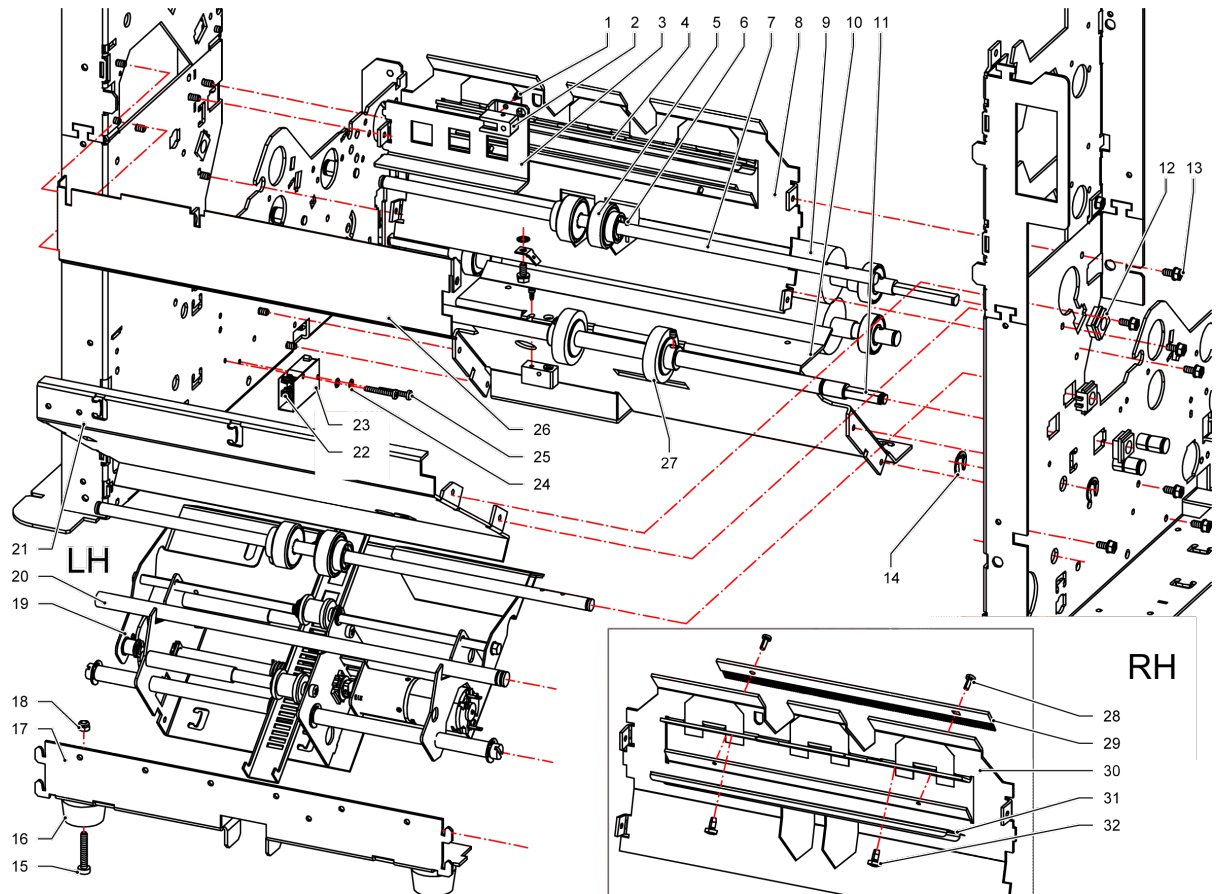
1. Remove the document feeders.
2. Remove the LH and the RH side cover, items 7 and 24.



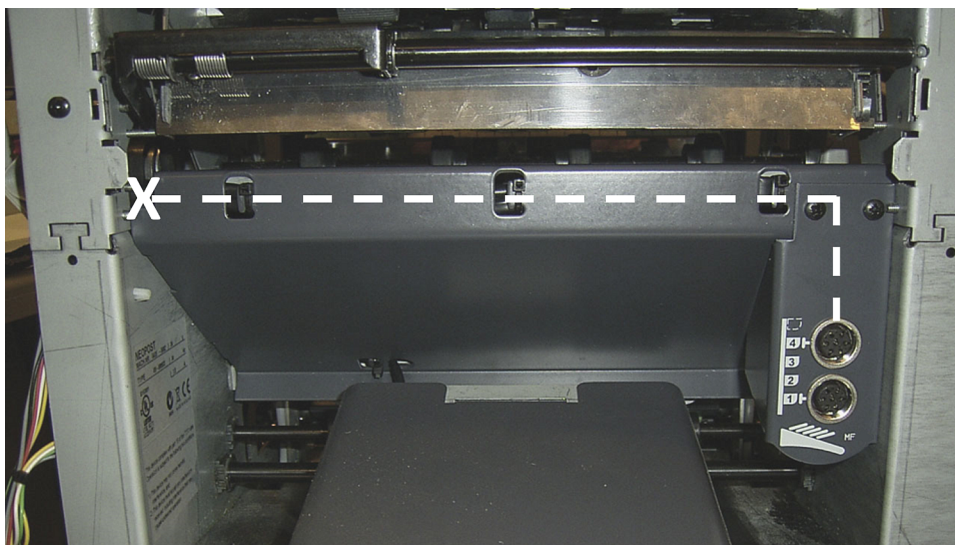
3

MI74: Installation of the maxifeeder MF-4

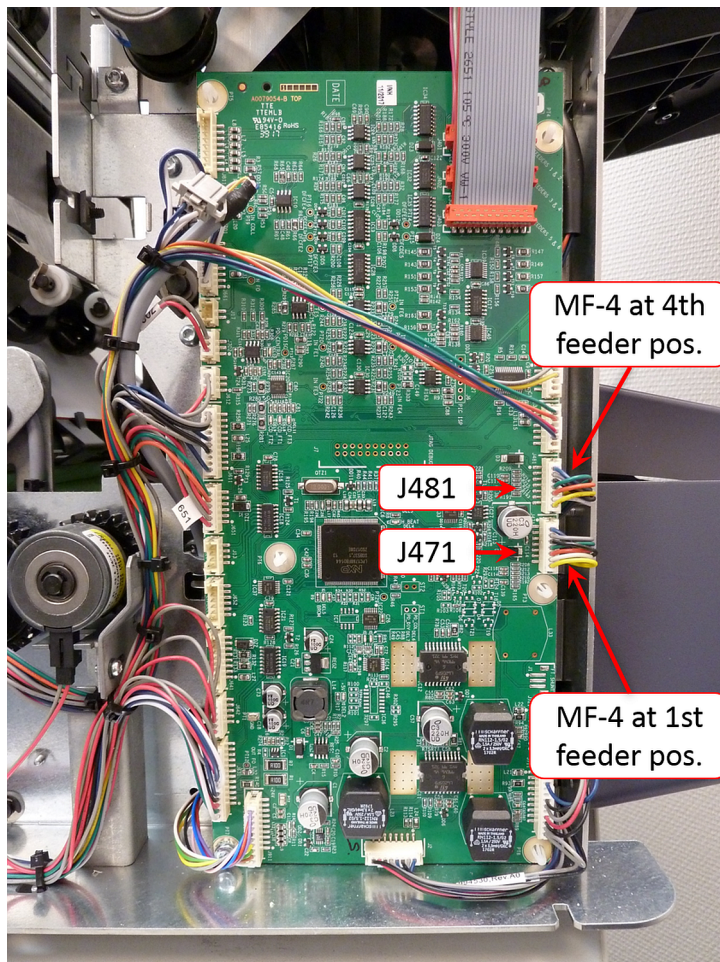
- Remove the screening plate, item 26 in the figure (i.e the cover below the first document feeder).



- Mount the connector bracket assy. to the intermediate plate., item 21.
- Guide the wiring along the inner side of the intermediate plate.

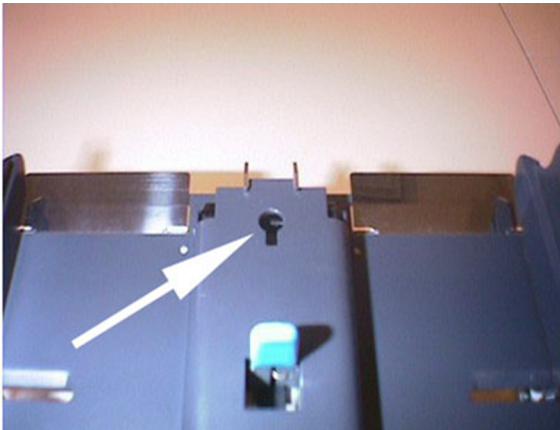


- Secure the wiring with 3 wire straps.
- Guide the connector through the space between the base frame and the feeder unit frame (indicated with X in figure).
- Replace the screening plate.
- For both, **FV-2B / FV-2C**: connect the connectors to the main board. Place the connector marked with sticker no. 1 at J471 of the main board. This is the connector for the MF-4 at the first feeder position. In case of a second maxiFeeder, positioned at feeder 4, place the connector marked with sticker no. 2 at J481.

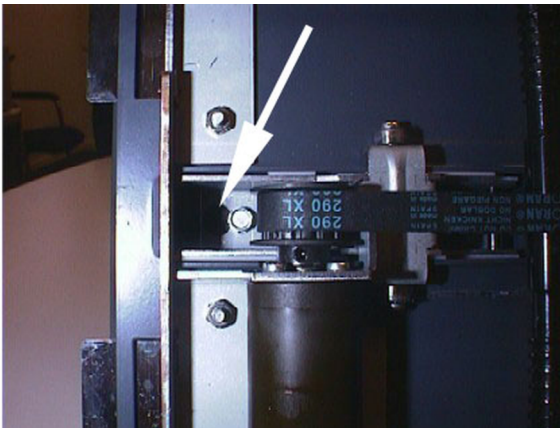


- Replace the LH and RH side covers.

11. Place the feed plate (assy.) over the paper feed bracket in such a way that the pre-mounted hex. head screw at the bottom of the feed plate (assy.) falls through the hole in the paper feed bracket.



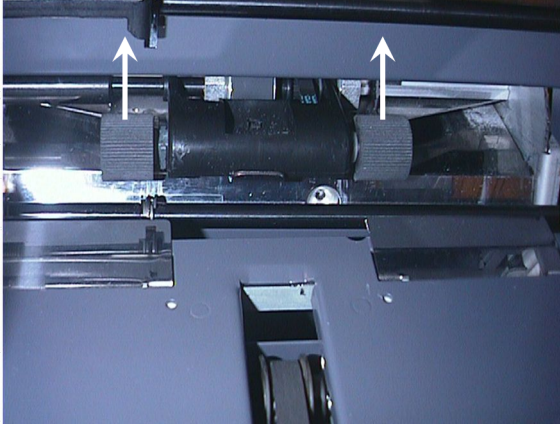
12. Tighten the torx screw at the bottom side of the maxiFeeder.



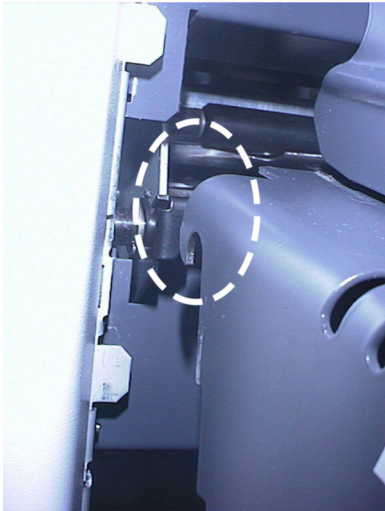
13. Attach the maxiFeeder at the first feeder position and connect it to the system. The maxiFeeder can be placed into position in the exact same way as you would with any other feeder namely by mounting it on the frame axle.

Proceed as follows:

Lift the paper feed rollers with the front edge of the maxiFeeder as indicated by the arrow.



14. Move the maxiFeeder forward until it hooks behind the frame axle.



15. To activate the maxiFeeder for either short documents (up to 156 mm docs) or for documents with a max. height of 356 mm a license has to be added. Refer to "[Add a license](#)" on page 11" or refer to the User Guide of the Document System.
-

Add a license

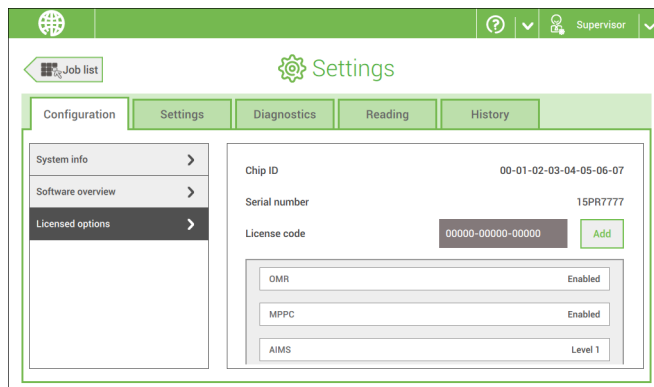


If for some reason the Field fitted license key has not been delivered with the maxiFeeder it can also be found at <http://ra.neopost.com/input/keys.php>.

If the maxiFeeder license hasn't been factory fitted, it can be manually added.

For a DS-85i / DS-95i

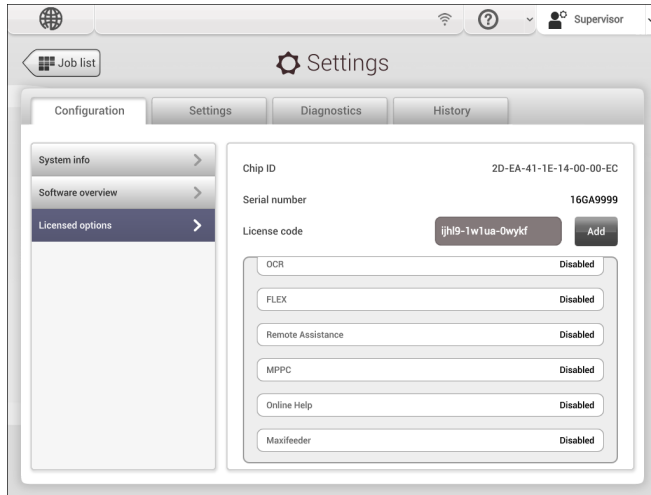
1. Login as supervisor or service.
2. Open the settings menu.
3. In the tab Configuration open the Licensed option screen and enter the license code.



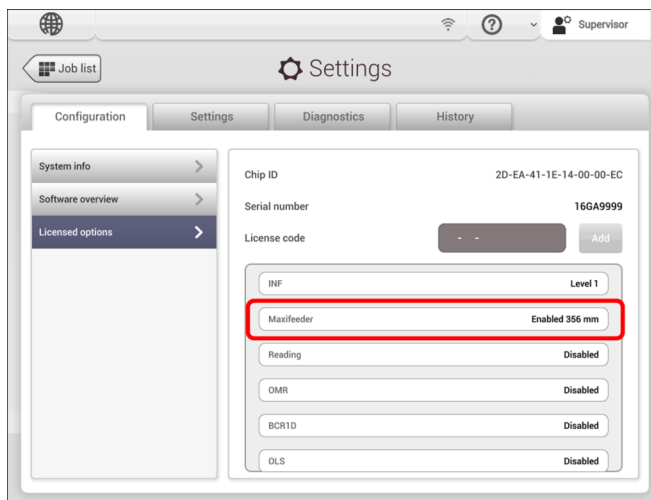
4. Tap **[Add]**. The system verifies the license key. If the license key has been verified successfully, the option is added to the system. When leaving the settings menu the document system will restart. After the restart the document system with the maxiFeeder is ready for use.

For a DS-90i

1. Login as supervisor or service.
2. Open the settings menu.
3. In the tab Configuration open the Licensed option screen and enter the license code.

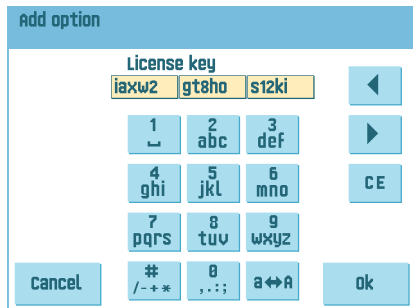


4. Tap **[Add]**. The system verifies the license key. If the license key has been verified successfully, the option is added to the system. When leaving the settings menu the document system will restart. After the restart the document system with the maxiFeeder is ready for use.
5. The options overview shows that the maxiFeeder license has been added.



For a DS-85

1. Login as supervisor.
2. Press the **[Options]** button to open the options menu.
3. In the Options screen, press the **[Add]** button.



4. Use the keypad to enter the license key code that you received from the supplier to activate the relevant option on this machine.
If needed, use the arrow keys to navigate through the entered characters.
5. Press the **[OK]** button to add the licensed option.
The system will now verify the license key.
6. Switch the system off and on.
7. The options overview shows that the maxiFeeder license has been added.

